



Government of India  
Ministry of Earth Sciences  
India Meteorological Department



Press Release  
Date: 24<sup>th</sup> May 2026  
Time of Issue: 1415 hours IST

**Subject: (i) Heat wave to severe heat wave conditions likely to continue to prevail over Central & Northwest India during next 7 days; East & adjoining Peninsular India during next 3-5 days. Reduction in maximum temperatures likely from 29<sup>th</sup> May onwards.**

**(ii) Isolated heavy to very rainfall likely over Kerala & Lakshadweep, Tamil Nadu, Northeast & adjoining east India during next 4-5 days.**

**Advance of Southwest Monsoon 2026 (Annexure I):**

- ❖ The Northern Limit of Monsoon continues to pass through 7°N/60°E, 7°N/70°E, 7°N/75°E, 8°N/80°E, 10°N/85°E, 13.5°N/90°E, and 17°N/95°E as on 24<sup>th</sup> May 2026.
- ❖ Conditions are favourable for further advance of southwest monsoon into some more parts of southwest & southeast Arabian Sea, Comorin Area, southwest, southeast & eastcentral Bay of Bengal and remaining parts of Andaman Sea during next 2-3 days.

**Realised weather during past 24 hours ending at 0830 hours IST of today, the 24<sup>th</sup> May, 2026:**

- ❖ **Heavy to very heavy rainfall (11-20 cm) with extremely heavy rainfall ( $\geq 21$  cm)** has been recorded at isolated places over Assam & Meghalaya.
- ❖ **Heavy to very heavy rainfall (11-20 cm)** has been recorded at isolated places over Coastal Karnataka.
- ❖ **Heavy rainfall (7-11 cm)** has been recorded at isolated places over Arunachal Pradesh, Tripura, Sub-Himalayan West Bengal & Sikkim, Bihar, Konkan, North Interior Karnataka and Kerala.
- ❖ **Hailstorm** occurred at isolated places over Uttarakhand.
- ❖ **Thunderstorm accompanied with Squally/Gusty winds with speed reaching 60-100 kmph** prevailed at isolated places over Assam & Meghalaya, Odisha, West Uttar Pradesh, Jharkhand, Sub-Himalayan West Bengal and **with speed reaching 40-60 kmph** at isolated places over Arunachal Pradesh, Nagaland, Manipur, Mizoram & Tripura, Marathawada, Coastal Andhra Pradesh, Madhya Pradesh, Konkan, Himachal Pradesh, Saurashtra & Kutch, Madhya Maharashtra, East Uttar Pradesh, Bihar, Tamil Nadu, Punjab, Haryana and Uttarakhand.
- ❖ **Heat wave conditions** prevailed in many places over Vidarbha; in few pockets over Chhattisgarh; in isolated pockets over East Uttar Pradesh, Bihar, Madhya Pradesh, Odisha, West Rajasthan.
- ❖ **Warm night conditions** prevailed in isolated pockets over East Uttar Pradesh.

**Temperature Conditions during past 24 hours till 0830 hours IST of today:**

- ❖ **Day Temperatures/Maximum Temperatures (as on 23-05-2026):** Yesterday, Maximum temperatures were in the range of 43-47°C over Central India, adjoining Uttar Pradesh, east and north Peninsular India and 40-43°C over rest parts of the country except parts of Northeast India, Western Himalayan region and west south Peninsular India. **The highest maximum temperature of 47.1°C was reported at Brahmpuri (Vidarbha).**
- ❖ **Day Temperatures/Maximum Temperature Departures (as on 23-05-2026):** Yesterday, Maximum temperatures were **appreciably above normal (3.1°C to 5.0°C)** over East Uttar Pradesh, Bihar, Jharkhand, Vidarbha, Odisha; **above normal (1.6°C to 3.0°C)** over Himachal Pradesh, West Uttar Pradesh, Rajasthan, Gujarat State, Madhya Pradesh, Chhattisgarh, Gangetic West Bengal, Coastal Andhra Pradesh & Yanam and below normal or near normal over rest parts of the country.
- ❖ **Night Temperatures/Minimum temperatures (as on 24-05-2026)** were **appreciably above normal (3.1°C to 5.0°C)** over East Rajasthan, Vidarbha, Odisha and Gangetic West Bengal; **above normal (1.6°C to 3.0°C)** over Jammu-Kashmir, north Punjab, East Uttar Pradesh, Madhya Pradesh, Gujarat State, Konkan & Goa, Madhya Maharashtra, Jharkhand, Telangana, Coastal Andhra Pradesh & Yanam and below normal or near normal over rest parts of the country.

### Weather Systems, Forecast and Warnings (Annexure II & III):

- ❖ The **Western Disturbance** as a cyclonic circulation over Jammu & neighbourhood in lower tropospheric levels.
- ❖ An upper air **cyclonic circulation** lies over south Bihar & neighbourhood and a north-south **trough** runs from this upper air cyclonic circulation to north coastal Andhra Pradesh in lower tropospheric levels.
- ❖ An upper air **cyclonic circulation** lies over central Assam & neighbourhood in lower tropospheric levels.
- ❖ An upper air **cyclonic circulation** lies over southwest Bay of Bengal & neighbourhood in lower & middle tropospheric levels tilting southwestwards with height.
- ❖ A fresh **Western Disturbance** likely to affect Northwest India from 28<sup>th</sup> May, 2026.

### Under the influence of above systems, the following weather is likely:

#### Northeast India:

- ❖ **Fairly widespread to widespread** light to moderate rainfall with **thunderstorm, lightning & gusty winds (speed reaching 40-50 kmph)** likely over Assam & Meghalaya on 24<sup>th</sup> & 25<sup>th</sup> and Nagaland, Manipur and Mizoram on 24<sup>th</sup> May.
- ❖ **Extremely heavy rainfall** very likely at isolated places over Assam & Meghalaya on 24<sup>th</sup> May.
- ❖ **Isolated heavy rainfall** likely over Arunachal Pradesh during 24<sup>th</sup>-26<sup>th</sup>; Assam & Meghalaya during 24<sup>th</sup>-29<sup>th</sup> and Nagaland, Manipur, Mizoram & Tripura on 24<sup>th</sup> & 25<sup>th</sup>, 29<sup>th</sup> & 30<sup>th</sup> May with **isolated very heavy rainfall** also likely over Arunachal Pradesh on 24<sup>th</sup> & 25<sup>th</sup>; Assam & Meghalaya during 24<sup>th</sup>-27<sup>th</sup> May.

#### South Peninsular India:

- ❖ **Widespread** light to moderate rainfall with **thunderstorm, lightning & gusty winds (speed reaching 40-50 kmph)** likely over Kerala & Mahe and Lakshadweep during 24<sup>th</sup>-28<sup>th</sup> May.
- ❖ **Isolated to scattered** light to moderate rainfall with **thunderstorm, lightning & gusty winds (speed reaching 40-50 kmph)** likely over Tamil Nadu, Puducherry & Karaikal and Interior Karnataka during 24<sup>th</sup>-28<sup>th</sup>; Coastal Andhra Pradesh & Yanam, Rayalaseema during 24<sup>th</sup>-27<sup>th</sup> and Telangana during 24<sup>th</sup>-30<sup>th</sup> May.
- ❖ **Thundersquall (wind speed reaching 50-60 kmph gusting to 70 kmph)** likely over Rayalaseema on 24<sup>th</sup> and North Interior Karnataka during 24<sup>th</sup>-26<sup>th</sup> May.
- ❖ **Isolated Heavy rainfall** also likely over Tamil Nadu, Puducherry & Karaikal during 24<sup>th</sup>-26<sup>th</sup>; Kerala & Mahe during 24<sup>th</sup>-28<sup>th</sup>; Lakshadweep during 24<sup>th</sup>-27<sup>th</sup>; Coastal Karnataka on 24<sup>th</sup>; Interior Karnataka on 24<sup>th</sup> & 25<sup>th</sup> May.
- ❖ **Isolated Hailstorm activity** likely over North Interior Karnataka on 24<sup>th</sup> May.

#### East India:

- ❖ **Fairly widespread to widespread** light to moderate rainfall with **thunderstorm, lightning & gusty winds (speed reaching 40-50 kmph)** likely over Sub-Himalayan West Bengal & Sikkim during 24<sup>th</sup>- 26<sup>th</sup> May.
- ❖ **Isolated to scattered** light to moderate rainfall with **thunderstorm, lightning & gusty winds (speed reaching 40-50 kmph)** likely over Gangetic West Bengal, Jharkhand & Odisha during 24<sup>th</sup> -30<sup>th</sup>; Bihar during 24<sup>th</sup>-28<sup>th</sup> May.
- ❖ **Thundersquall (wind speed reaching 50-60 kmph gusting to 70 kmph)** likely over Gangetic West Bengal on 24<sup>th</sup> & during 27<sup>th</sup>-29<sup>th</sup>; Bihar during 26<sup>th</sup>-28<sup>th</sup>; Jharkhand & Odisha on 24<sup>th</sup> & 25<sup>th</sup> May.
- ❖ **Isolated heavy rainfall** likely over Sub-Himalayan West Bengal & Sikkim, Bihar during 24<sup>th</sup>-27<sup>th</sup> May **with isolated very heavy rainfall** also likely over Sub-Himalayan West Bengal & Sikkim on 24<sup>th</sup> May.

#### Northwest India:

- ❖ **Isolated to scattered** light to moderate rainfall with **thunderstorm, lightning & gusty winds (speed reaching 40-50 kmph)** likely over Jammu-Kashmir, Himachal Pradesh on 24<sup>th</sup>, 25<sup>th</sup> & during 28<sup>th</sup>-30<sup>th</sup>; Uttarakhand on 24<sup>th</sup>, 25<sup>th</sup>, 29<sup>th</sup> & 30<sup>th</sup> May.
- ❖ **Isolated to scattered** light to moderate rainfall with **thunderstorm, lightning & gusty winds (speed reaching 40-50 kmph)** likely over Punjab, Haryana & Chandigarh, West Uttar Pradesh on 24<sup>th</sup> & during 28<sup>th</sup>-30<sup>th</sup> May; East Uttar Pradesh during 25<sup>th</sup>-29<sup>th</sup> and Rajasthan on 24<sup>th</sup> & 30<sup>th</sup> May.
- ❖ **Thundersquall (wind speed reaching 50-60 kmph gusting to 70 kmph)** likely over Jammu-Kashmir on 24<sup>th</sup>; East Uttar Pradesh on 28<sup>th</sup> & 29<sup>th</sup> and West Uttar Pradesh on 29<sup>th</sup> & 30<sup>th</sup> May.
- ❖ **Isolated Hailstorm activity** likely over Jammu-Kashmir on 24<sup>th</sup> and Himachal Pradesh on 29<sup>th</sup> May.
- ❖ **Duststorm** likely at isolated places over Rajasthan on 24<sup>th</sup> May.

### Central India:

- ❖ **Isolated** light to moderate rainfall with **thunderstorm, lightning & gusty winds** (speed reaching 40-50 kmph) likely over Vidarbha during 26<sup>th</sup>-28<sup>th</sup> May.

### West India:

- ❖ **Isolated** light to moderate rainfall with **thunderstorm, lightning & gusty winds** (speed reaching 40-50 kmph) likely over Konkan & Goa on 24<sup>th</sup>, 27<sup>th</sup> & 28<sup>th</sup>; Madhya Maharashtra during 24<sup>th</sup>-28<sup>th</sup> and Marathawada during 24<sup>th</sup>-27<sup>th</sup> May.

### Forecast of maximum/day temperatures:

- ❖ No significant change in maximum temperatures likely over many parts of Northwest India till 28<sup>th</sup> May and gradual fall by 3-5°C on 29<sup>th</sup> & 30<sup>th</sup> May.
- ❖ Gradual rise in maximum temperatures by 2-3°C likely over Punjab till 26<sup>th</sup> May; no significant change on 27<sup>th</sup> & 28<sup>th</sup> May and gradual fall by 3-5°C on 29<sup>th</sup> & 30<sup>th</sup> May.
- ❖ No significant change in maximum temperatures likely over Central India till 28<sup>th</sup> May and gradual fall by 2-4°C on 29<sup>th</sup> & 30<sup>th</sup> May.
- ❖ No significant change in maximum temperatures likely over East India till 26<sup>th</sup> May and gradual fall by 2-3°C during 27<sup>th</sup> - 30<sup>th</sup> May.
- ❖ No significant change in maximum temperatures likely over the rest parts of country till 30<sup>th</sup> May 2026.

### Heat Wave, Hot & Humid weather and Warm Night conditions warning:

- ❖ **Heat wave conditions** very likely in isolated pockets over Punjab, Haryana Chandigarh & Delhi during 24<sup>th</sup>-28<sup>th</sup>; with **severe heat wave conditions** in some pockets during 25<sup>th</sup>-27<sup>th</sup> May.
- ❖ **Heat wave conditions** very likely in isolated/some pockets over Uttar Pradesh during 24<sup>th</sup>-28<sup>th</sup> May with **severe heat wave conditions** in isolated/some pockets over East Uttar Pradesh during 24<sup>th</sup>-26<sup>th</sup> May.
- ❖ **Heat wave conditions** very likely in isolated/some pockets over Rajasthan during 24<sup>th</sup>-30<sup>th</sup> May with **severe heat wave conditions** in isolated/some pockets over West Rajasthan during same period.
- ❖ **Heat wave conditions** very likely in isolated pockets over Madhya Pradesh during 24<sup>th</sup>-30<sup>th</sup>; with **severe heat wave conditions** during 24<sup>th</sup>-28<sup>th</sup> May.
- ❖ **Heat wave conditions** very likely in isolated pockets over Vidarbha during 24<sup>th</sup>-29<sup>th</sup>; with **severe heat wave conditions** during 24<sup>th</sup>-27<sup>th</sup> May.
- ❖ **Heat wave conditions** very likely in isolated pockets over Chhattisgarh during 24<sup>th</sup>-27<sup>th</sup>; Odisha during 24<sup>th</sup>-28<sup>th</sup>; Bihar, Jharkhand and Telangana during 24<sup>th</sup>-26<sup>th</sup>; Jammu-Kashmir on 26<sup>th</sup> & 27<sup>th</sup> and Himachal Pradesh during 26<sup>th</sup>-28<sup>th</sup> May.
- ❖ **Hot and humid weather conditions** likely to prevail over Coastal Andhra Pradesh & Yanam on 24<sup>th</sup>; Gangetic West Bengal during 24<sup>th</sup>-26<sup>th</sup> May.
- ❖ **Warm Night conditions** very likely to prevail in isolated pockets over West Uttar Pradesh on 24<sup>th</sup>; East Uttar Pradesh on 24<sup>th</sup> & 25<sup>th</sup> and Vidarbha during 24<sup>th</sup>-26<sup>th</sup> May.

### Fisherman Warning:

Fishermen are advised not to venture into the following areas:

Bay of Bengal: Over Gulf of Mannar during 24<sup>th</sup> May to 29<sup>th</sup> May; over most parts of south Bay of Bengal during 24<sup>rd</sup> to 27<sup>th</sup> May; over many parts of south Bay of Bengal on 27<sup>th</sup> and 28<sup>th</sup> May; Along and off south Andhra Pradesh coast, adjoining north Tamil Nadu and north Andhra Pradesh coasts on 24<sup>th</sup> & 25<sup>th</sup> May.

Arabian Sea: Along and off Keralam, Karnataka coasts, Lakshadweep, Comorin areas, adjoining Maldives area, few parts of southeast, southwest Arabian Sea on 24<sup>th</sup> May; Along and off Keralam, Karnataka coasts, Lakshadweep, Comorin areas, adjoining Maldives area during 25<sup>th</sup> to 29<sup>th</sup> May; Along and off Somalia coast, adjoining some parts of southwest Arabian Sea during 24<sup>th</sup> May to 29<sup>th</sup> May.

### Weather conditions and forecast over Delhi/NCR during 24<sup>th</sup> -27<sup>th</sup> May, 2026 (Annexure IV)

For more details, kindly refer National Weather Bulletin:

[https://mausam.imd.gov.in/responsive/all\\_india\\_forcast\\_bulletin.php](https://mausam.imd.gov.in/responsive/all_india_forcast_bulletin.php)

For District wise warnings refer: <https://mausam.imd.gov.in/responsive/districtWiseWarningGIS.php>

For Fishermen warning refer <https://rsmcnewdelhi.imd.gov.in/fishermenwarning.php>

### Significant rainfall recorded (in cm) (from 0830 hours IST of yesterday to 0830 hours IST of today):

- ❖ **Assam & Meghalaya:** Tura\_Aws (dist West Garo Hills) 29, ZRS Akbarpur (dist Sribhumi) 21, Karimganj\_aws (dist Sribhumi) 19, B P Ghat (dist Sribhumi) 15, Matijuri Arg (dist Hailakandi) 15, Karimganj (dist Sribhumi) 11, Matijuri (dist Hailakandi) 9, A P Ghat (dist Cachar) 8, Bhaghmara (dist South Garo Hills) 8, Silchar (dist Cachar) 8, Bahalpur (dist Dhubri) 7;
- ❖ **Coastal Karnataka:** Coastal Karnataka: Karwar (dist Uttara Kannada) 20; Manki (dist Uttara Kannada) 12; Mundgod (dist Uttara Kannada) 9; Yellapur (dist Uttara Kannada) 8; Siddapura (dist Udupi) 7; Udupi (dist Udupi), Ankola (dist Uttara Kannada), Kumta (dist Uttara Kannada) 6 Each;
- ❖ **Arunachal Pradesh:** Khonsa (dist Tirap) 10;
- ❖ **Konkan:** Devgad (dist Sindhudurg) 10, Kankavli (dist Sindhudurg) 7;
- ❖ **North Interior Karnataka:** North Interior Karnataka: Tavaragera (dist Koppal) 10; Nalwatwad (dist Vijayapura) 9; Shorapur (dist Yadgir), Narayanpur HMS (dist Yadgir) 8 Each; Deodurg (dist Raichur), Jalahalli (dist Raichur), Kakkeri (dist Yadgir) 7 Each; Kaladgi (dist Bagalkote), Balaganur (dist Raichur) 6 Each;
- ❖ **Kerala:** Munakkal (dist Thrissur) 8, Mancompu (dist Alapuzha) 6;
- ❖ **Sub-Himalayan West Bengal & Sikkim:** Mangan (dist Mangan) 9, Singhik (dist Mangan) 7, Kumlai T.e. (dist Jalpaiguri) 7;
- ❖ **Tripura:** Agartala Aero (dist West Tripura) 8, Met Agartala Aws (dist West Tripura) 8, Udaipur (dist Gomati) 7;
- ❖ **Bihar:** Pranpur (dist Katihar) 7

### Gusty winds (in $\geq 40$ kmph) (from 0830 hours IST of yesterday to 0830 hours IST of today):

- ❖ **Sub-Himalayan West Bengal:** Majhian 98; Malda 44;
- ❖ **Assam & Meghalaya:** Manas 70, Diphu 56, Karimganj 54, Akbarpur 54, Umpanai 44, Amingaon 43, Algapur\_Circle 43, Panchgram 41, Dhekiajuli 39, Gauhati\_University 37, Nalbari 35, Nalbari 35, Haflong 33, Darrang33, SCS\_College\_Of\_Agriculture\_Dhubri 33, Down\_Town\_University 33, College\_Of\_Horticulture\_Farming\_System\_Research 33, Guwahati\_City 31, Haflong 31, Shillong (Ekh) 54;
- ❖ **Jharkhand:** Dumka 65;
- ❖ **West Uttar Pradesh:** Shamli 65, G. B. Nagar & Aligarh 46 Each, Agra & Bareilly 44 Each, Agra & Shahjahanpur 43 Each, Biulandshahar 41, Amroha & Saharanpur 39 Each, Hindon 37;
- ❖ **Odisha:** Keonjhar 63;
- ❖ **Uttarakhand:** Chamoli 59;
- ❖ **Punjab:** Patiala 57;
- ❖ **Haryana:** Karnal 57;
- ❖ **Tamil Nadu:** Madurai\_Isro (Madurai) 57, Erode\_ISRO(Erode) 43, Yercaud\_ISRO (Salem) 41, Kovilpatti (Thoothukudi) 41 & Virudhunagar (Virudhunagar) 39;
- ❖ **Bihar:** Madhepura 56;
- ❖ **Nagaland, Manipur, Mizoram & Tripura:** Dimapur 53; Wokha 44; Sakshi 44; Lembucherra 57; Kamalpur 50; Met Agartala 83; Hezamara 39;
- ❖ **East Uttar Pradesh:** Lucknow 52, Lucknow (Integral University) 48, Bahraich & Mirzapur, Barabanki 39 Each, Gorakhpur & Varanasi 37 Each;
- ❖ **Madhya Maharashtra:** Niasm\_Baramati (Pune) 52, Kalvan (NASHIK) 39;
- ❖ **Saurashtra & Kutch:** Bhachau 50;
- ❖ **Himachal Pradesh:** Seobagh 48, Chamba 43;
- ❖ **Konkan & Goa:** Devgad (Sindhudurg) 48, Palghar\_AWS\_400(Palghar) 24;
- ❖ **West Madhya Pradesh:** Sehore 48;
- ❖ **East Madhya Pradesh:** Rewa 46;
- ❖ **Coastal Andhra Pradesh:** Maruteru 46;
- ❖ **Marathwada:** Ambejogai (Beed) 44, Jalgaon (Jalgaon) 44
- ❖ **Arunachal Pradesh:** Longding\_New 44, Bomdila 43

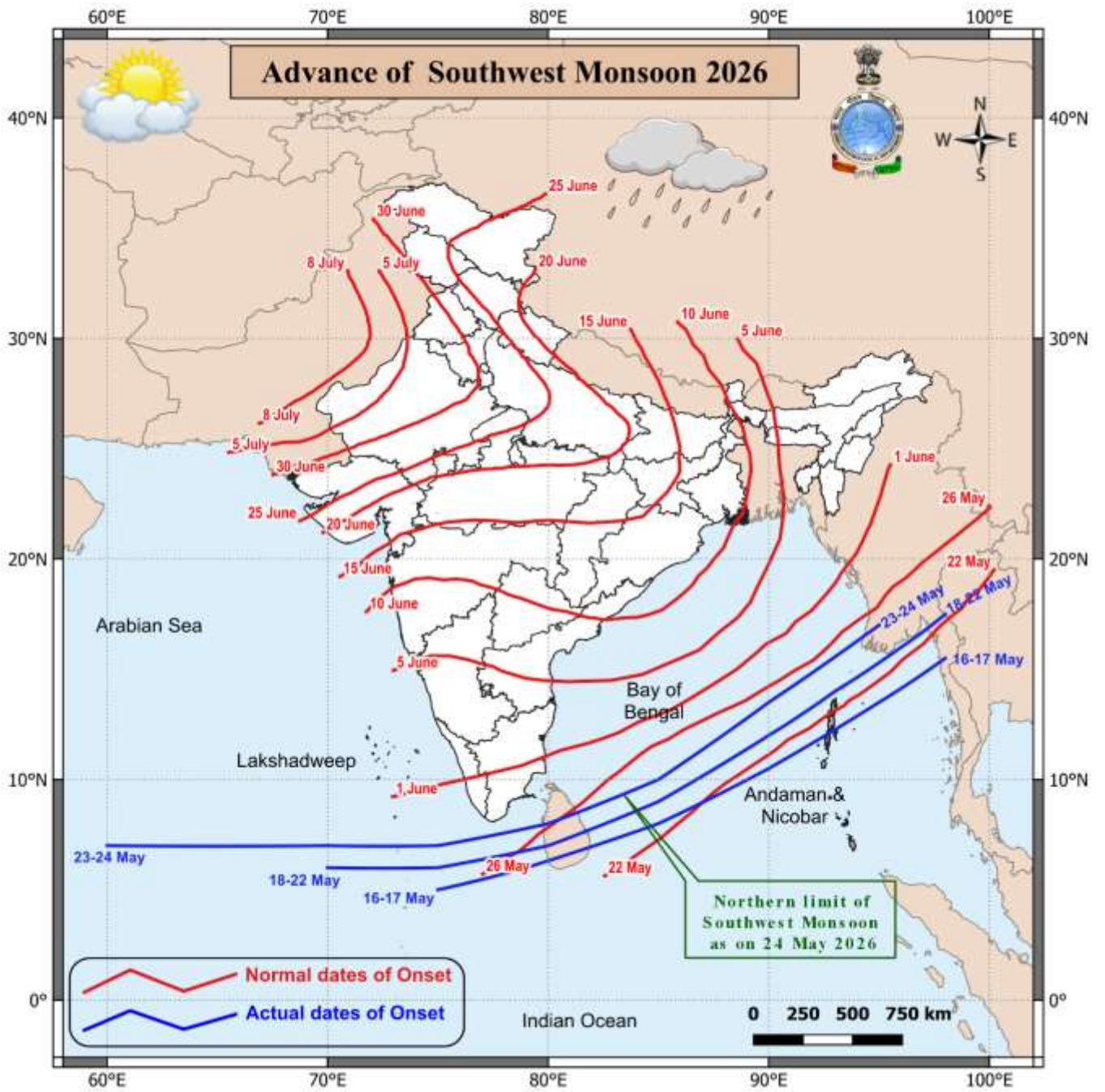
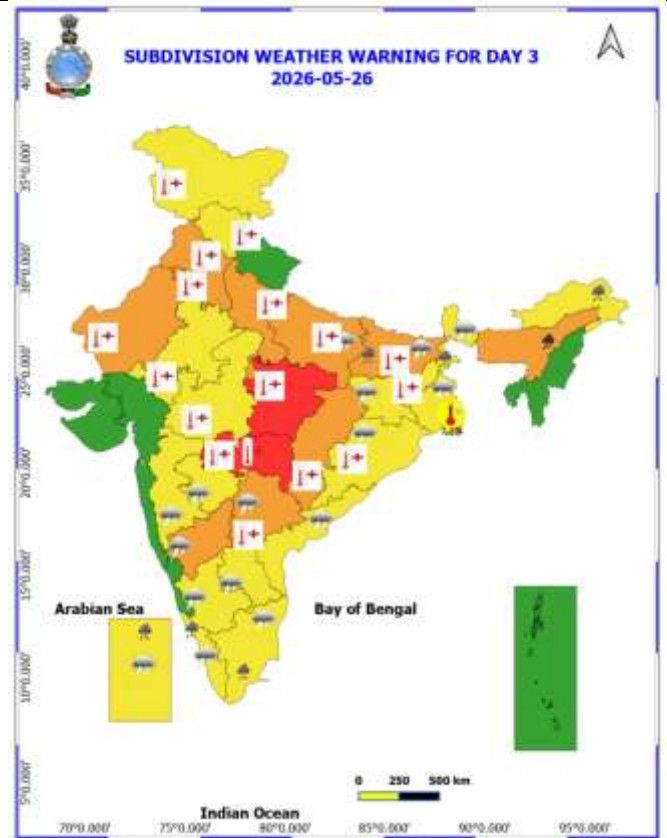
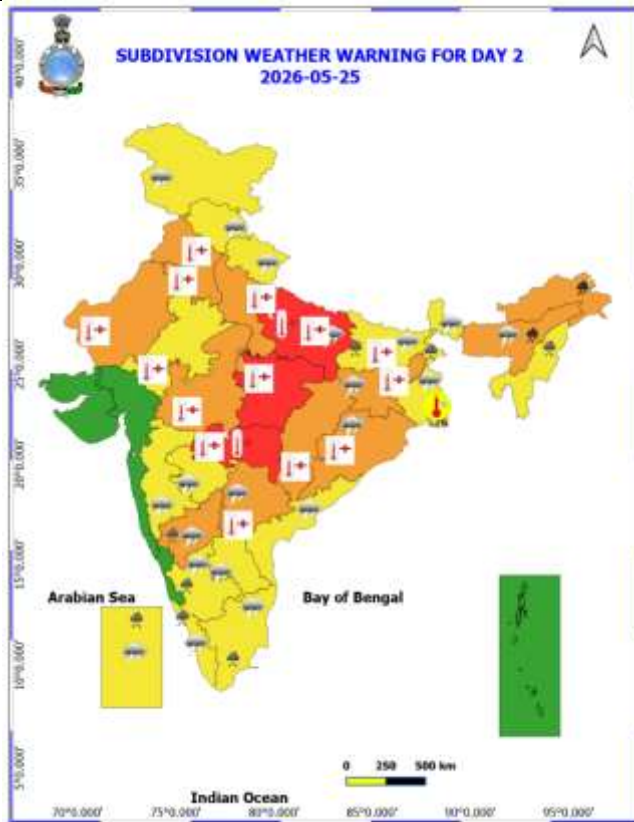
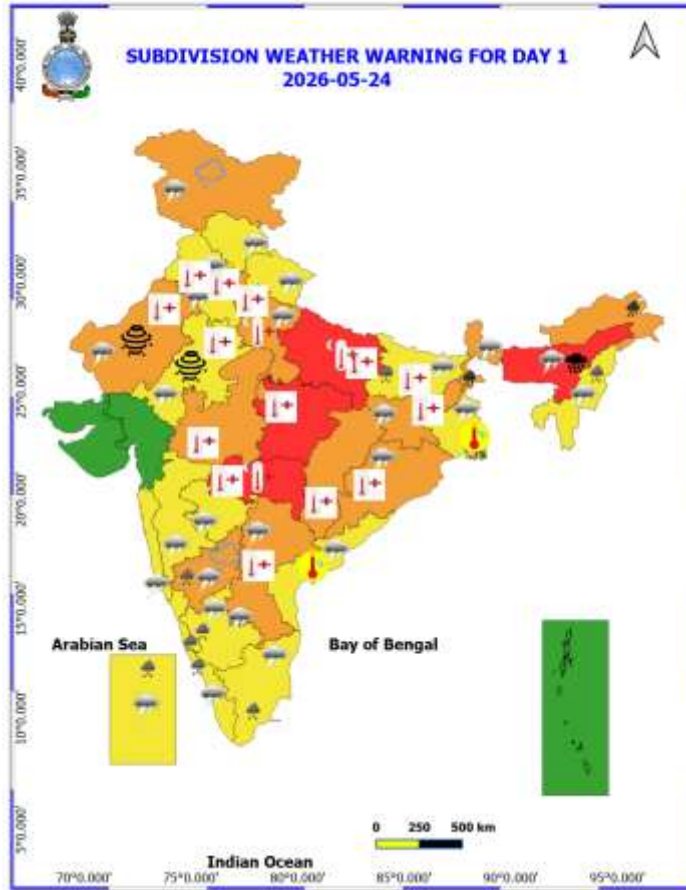
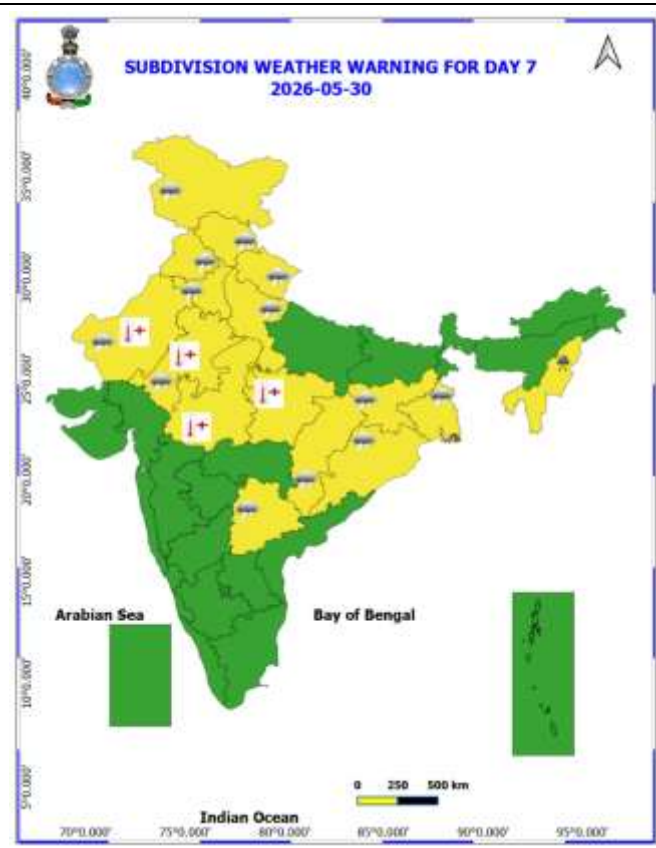
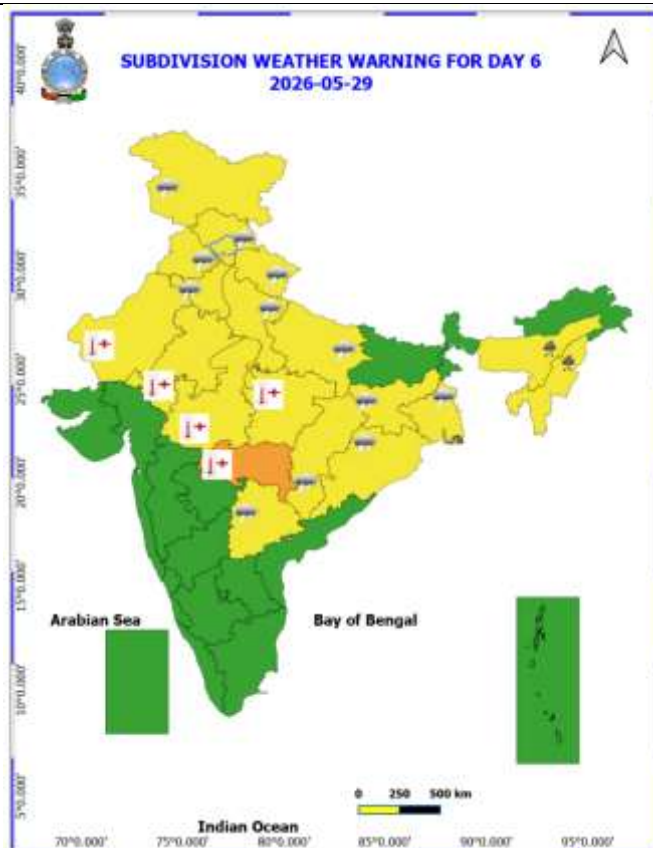
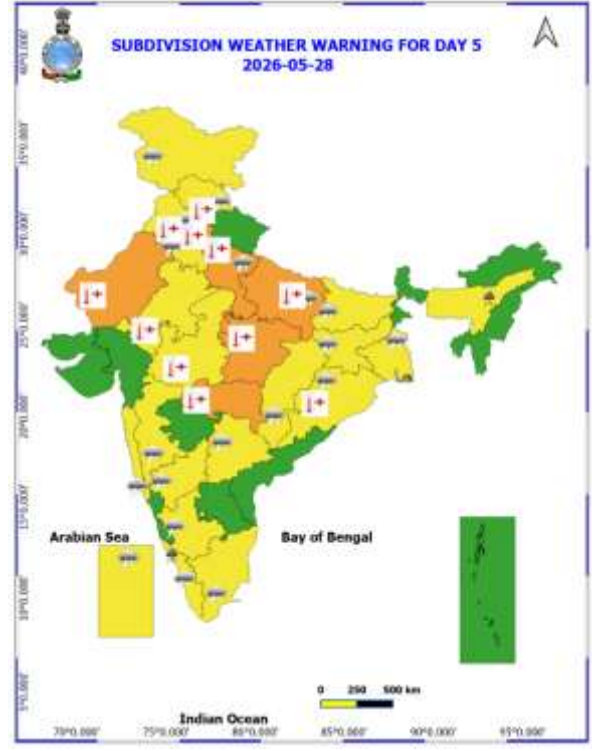
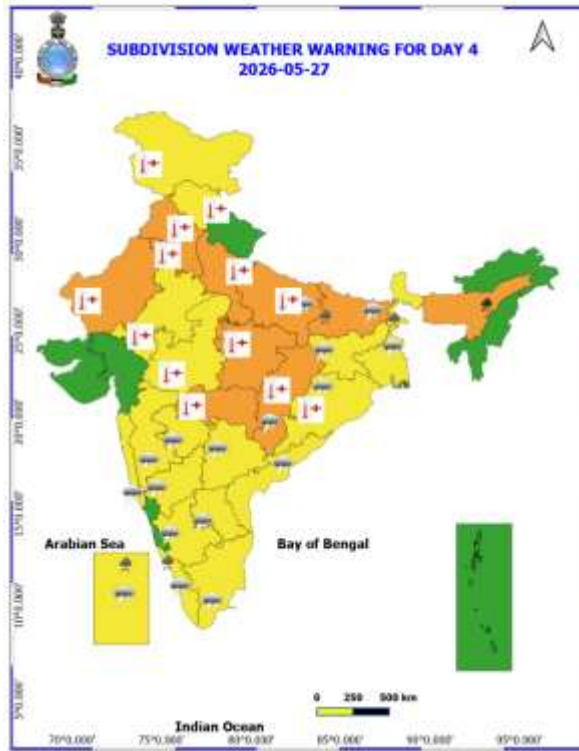


Table-1								
7 Days Rainfall Forecast								
S.No.	Subdivision	24- May	25- May	26- May	27- May	28- May	29- May	30- May
		Day 1	Day 2	Day 3	Day 4	Day 5	Day 6	Day 7
1	ANDAMAN & NICOBAR ISLANDS	WS	WS	WS	WS	WS	WS	WS
2	ARUNACHAL PRADESH	WS	WS	WS	WS	FWS	SCT	SCT
3	ASSAM & MEHGHALAYA	WS	WS	WS	WS	FWS	FWS	FWS
4	NAGALAND, MANIPUR, MIZORAM AND TRIPURA	FWS	FWS	FWS	FWS	FWS	FWS	FWS
5	SUB HIMALAYAN WEST BENGAL & SIKKIM	WS	WS	WS	WS	FWS	SCT	SCT
6	GANGETIC WEST BENGAL	ISOL	ISOL	SCT	FWS	FWS	FWS	SCT
7	ODISHA	ISOL	ISOL	ISOL	ISOL	ISOL	ISOL	ISOL
8	JHARKHAND	ISOL	ISOL	ISOL	ISOL	SCT	SCT	SCT
9	BIHAR	ISOL	SCT	SCT	SCT	SCT	ISOL	ISOL
10	EAST UTTAR PRADESH	DRY	ISOL	ISOL	ISOL	SCT	SCT	ISOL
11	WEST UTTAR PRADESH	ISOL	DRY	DRY	DRY	ISOL	SCT	SCT
12	UTTARAKHAND	ISOL	ISOL	ISOL	ISOL	ISOL	SCT	SCT
13	HARYANA, CHANDIGARH & DELHI	ISOL	DRY	DRY	DRY	ISOL	SCT	SCT
14	PUNJAB	ISOL	DRY	DRY	DRY	ISOL	SCT	SCT
15	HIMACHAL PRADESH	ISOL	SCT	DRY	DRY	SCT	FWS	SCT
16	JAMMU AND KASHMIR AND LADAKH	SCT	SCT	DRY	DRY	SCT	SCT	ISOL
17	WEST RAJASTHAN	ISOL	DRY	DRY	DRY	DRY	DRY	ISOL
18	EAST RAJASTHAN	ISOL	DRY	DRY	DRY	DRY	DRY	ISOL
19	WEST MADHYA PRADESH	DRY	DRY	DRY	DRY	DRY	ISOL	ISOL
20	EAST MADHYA PRADESH	DRY	DRY	DRY	DRY	DRY	ISOL	ISOL
21	GUJRAT REGION	DRY	DRY	DRY	DRY	DRY	DRY	DRY
22	SAURASHTRA & KUTCH	DRY	DRY	DRY	DRY	DRY	DRY	DRY
23	KONKAN & GOA	ISOL	ISOL	ISOL	ISOL	ISOL	ISOL	ISOL
24	MADHYA MAHARASHTRA	ISOL	ISOL	ISOL	ISOL	ISOL	ISOL	ISOL
25	MARATHWADA	ISOL	ISOL	DRY	ISOL	ISOL	ISOL	ISOL
26	VIDARBHA	DRY	DRY	DRY	DRY	ISOL	ISOL	ISOL
27	CHHATTISGARH	DRY	DRY	ISOL	ISOL	ISOL	ISOL	ISOL
28	COASTAL ANDHRA PRADESH	ISOL	ISOL	ISOL	ISOL	SCT	SCT	SCT
29	TELANGANA	ISOL	ISOL	ISOL	ISOL	ISOL	ISOL	ISOL
30	RAYALASEEMA	SCT	SCT	SCT	SCT	SCT	SCT	SCT
31	TAMILNADU & PUDUCHERRY	ISOL	ISOL	ISOL	ISOL	ISOL	ISOL	ISOL
32	COSTAL KARNATAKA	WS	FWS	SCT	SCT	SCT	SCT	SCT
33	NORTH INTERIOR KARNATAKA	SCT	SCT	ISOL	ISOL	ISOL	SCT	SCT
34	SOUTH INTERIOR KARNATAKA	FWS	SCT	SCT	SCT	SCT	SCT	SCT
35	KERALA AND MAHE	WS	WS	WS	WS	WS	WS	WS
36	LAKSHADWEEP	WS	WS	WS	WS	WS	WS	WS

- As the lead period increases forecast accuracy decrease.





- Action may be taken based on ORANGE AND REDCOLOUR warnings.
- Vulnerable regions likely urban and hilly areas action may be initiated for heavy rainfall warning.
- As the lead period increases forecast accuracy decreases.

Detailed district-wise Multi-Hazard weather warning for next five days available at <https://mausam.imd.gov.in/responsive/districtWiseWarningGIS.php>

## Weather forecast over Delhi/NCR during 24<sup>th</sup> May to 27<sup>th</sup> May 2026

### Past Weather:

There has been fall in maximum temperatures up to 1-2 °C and no appreciable change in minimum temperatures during past 24 hours over Delhi. The maximum temperatures were found 41-43°C and the minimum temperatures are in the range 26-29°C respectively during past 24 hours over Delhi. The minimum temperatures are above normal (1.6°C to 3.0°C) at a few places and normal (-1.5°C to 1.5°C) over remaining parts of Delhi. The maximum temperatures were above normal (1.6°C to 3.0°C) at isolated places and normal (-1.5°C to 1.5°C) over remaining parts of Delhi. Partly cloudy sky with surface wind speeds up to 20 kmph gusting to 36 kmph prevailed over Delhi during past 24 hours. Very light rain observed at isolated places over Delhi during past 24 hours. Mainly clear sky with surface wind speeds up to 18 kmph gusting to 35 kmph likely to prevailed from southwest direction over the region in the forenoon today.

### Weather Forecast:

**24.05.2026:** Mainly clear sky. Heat wave conditions at isolated places. Sustained strong surface winds speed reaching 25-35 kmph occasionally gusting to 45 kmph during the day. The maximum temperatures over Delhi are likely to be in the range of 43°C to 45°C. The predominant surface wind is likely to be from the west direction with surface wind speed reaching up to 25 kmph during the afternoon hours. The wind speed will be decrease becoming up to 22 kmph from the west direction during evening and night.

**25.05.2026:** Mainly clear sky becoming partly cloudy sky towards afternoon. Heat wave conditions at isolated places. Sustained strong surface winds speed reaching 20-30 kmph occasionally gusting to 40 kmph during the day. Very light rain/drizzle accompanied with thunderstorm/lightning/dust storm and strong surface winds speed 40-50 kmph occasionally gusting to 60 kmph during afternoon to evening. The maximum and minimum temperatures over Delhi are likely to be in the range of 43°C to 45°C and 29°C to 31°C respectively. The minimum temperature will be above normal (1.6°C to 3.0°C) at most places, and the maximum temperature will be appreciably above normal (3.1°C to 5.0°C) at most places over Delhi. The predominant surface wind is likely to be from west direction with surface wind speed reaching up to 20 kmph during the morning hours. The wind speed will be increase becoming up to 25 kmph from the west direction during afternoon hours. The wind speed will decrease becoming up to 20 kmph from the west direction during evening and night.

**26.05.2026:** Mainly clear sky. Heat wave conditions at isolated places. Sustained strong surface winds speed reaching 20-30 kmph occasionally gusting to 40 kmph during the day. The maximum and minimum temperatures over Delhi are likely to be in the range of 43°C to 45°C and 28°C to 30°C respectively. The minimum temperature will be above normal (1.6°C to 3.0°C) at most places, and the maximum temperature will be appreciably above normal (3.1°C to 5.0°C) at most places over Delhi. The predominant surface wind is likely to be from northwest direction with surface wind speed reaching up to 22 kmph during the morning hours. The wind speed will be increase becoming up to 25 kmph from the northwest direction during afternoon hours. The wind speed will decrease becoming up to 20 kmph from the west direction during evening and night.

**27.05.2026:** Mainly clear sky. Heat wave conditions at isolated places. Sustained strong surface winds speed reaching 20-30 kmph occasionally gusting to 40 kmph during the day. The maximum and minimum temperatures over Delhi are likely to be in the range of 43°C to 45°C and 28°C to 30°C respectively. The minimum temperature will be above normal (1.6°C to 3.0°C) at most places, and the maximum temperature will be appreciably above normal (3.1°C to 5.0°C) at most places over Delhi. The predominant surface wind is likely to be from northwest direction with surface wind speed reaching up to 20 kmph during the morning hours. The wind speed will be increase becoming up to 25 kmph from the northwest direction during afternoon hours. The wind speed will decrease becoming up to 20 kmph from the west direction during evening and night.

### Impact expected and action suggested due to heat wave conditions:

- **Warning:** Heat wave conditions are expected; however, temperatures are likely to remain above normal. There may be moderate health risks, particularly for vulnerable groups such as infants, the elderly, and individuals with chronic illnesses.
- **Advisory:** Avoid prolonged exposure to heat. Wear lightweight, light-colored, and loose cotton clothing. Cover your head using a cloth, hat, or umbrella when outdoors.

## **Impact expected and action suggested due to isolated thunderstorm with lightning, gusty/squally winds & hailstorm over**

- ❖ **Thundersquall (wind speed reaching 50-60 kmph gusting to 70 kmph)** likely over Jammu-Kashmir, Rayalaseema on 24<sup>th</sup>; Jharkhand & Odisha on 24<sup>th</sup> & 25<sup>th</sup>; North Interior Karnataka during 24<sup>th</sup>-26<sup>th</sup> May; Gangetic West Bengal on 24<sup>th</sup> & during 27<sup>th</sup>-29<sup>th</sup>; Bihar during 26<sup>th</sup>-28<sup>th</sup>; East Uttar Pradesh on 28<sup>th</sup> & 29<sup>th</sup> and West Uttar Pradesh on 29<sup>th</sup> & 30<sup>th</sup> May.
- ❖ **Isolated Hailstorm activity** likely over Jammu-Kashmir, North Interior Karnataka on 24<sup>th</sup> and Himachal Pradesh on 29<sup>th</sup> May.

### **Impact expected:**

- Breaking of tree branches, uprooting of large avenue trees. Large dead limbs blown from trees. Damage to Standing crops.
- Minor to Major damage to banana and papaya trees.
- Minor to major damage to power and communication lines due to breaking of branches.
- Strong wind/hail may damage plantation, horticulture and standing crops.
- Partial damage to vulnerable structures due to strong winds.
- Minor damage to kutcha houses/walls and huts.
- Loose objects may fly.

### **Action suggested:**

- People are advised to keep a watch on the weather for worsening conditions and be ready to move to safer places accordingly.
- Stay indoors, close windows & doors and avoid travel if possible.
- Take safe shelters; do not take shelter under trees.
- Do not lie on concrete floors and do not lean against concrete walls.
- Unplug electrical/ electronic appliances.
- Immediately get out of water bodies.
- Keep away from all the objects that conduct electricity.

## **Impact Expected & Action Suggested due to heavy/very heavy rainfall/extremely heavy rainfall over**

- ❖ **Extremely heavy rainfall** very likely at isolated places over Assam & Meghalaya on 24<sup>th</sup> May.
- ❖ **Isolated heavy rainfall** likely over Arunachal Pradesh, Tamil Nadu, Puducherry & Karaikal during 24<sup>th</sup>-26<sup>th</sup>; Assam & Meghalaya during 24<sup>th</sup>-29<sup>th</sup>; Nagaland, Manipur, Mizoram & Tripura on 24<sup>th</sup>, 25<sup>th</sup>, 29<sup>th</sup> & 30<sup>th</sup>; Interior Karnataka on 24<sup>th</sup> & 25<sup>th</sup>; Kerala & Mahe during 24<sup>th</sup>-28<sup>th</sup>; Lakshadweep, Sub-Himalayan West Bengal & Sikkim, Bihar during 24<sup>th</sup>-27<sup>th</sup>; Coastal Karnataka on 24<sup>th</sup>; **with isolated very heavy rainfall** also likely over Sub-Himalayan West Bengal & Sikkim on 24<sup>th</sup> May; Arunachal Pradesh on 24<sup>th</sup> & 25<sup>th</sup>; Assam & Meghalaya during 24<sup>th</sup>-27<sup>th</sup> May.

### **Impact Expected**

- Localized Flooding of roads, water logging in low lying areas and closure of underpasses mainly in urban areas.
- Occasional reduction in visibility due to heavy rainfall.
- Disruption of traffic in major cities due to water logging in roads leading to increased travel time.
- Minor damage to kutcha roads.
- Possibilities of damage to vulnerable structure.
- Localized Landslides/Mudslides/landslips/mudslips/landsinks/mudsinks.
- Damage to horticulture and standing crops in some areas due to inundation.
- It may lead to riverine flooding in some river catchments (for riverine flooding please visit Web page of CWC)

### **Action Suggested**

- Check for traffic congestion on your route before leaving for your destination.
- Follow any traffic advisories that are issued in this regard.
- Avoid going to areas that face the water logging problems often.
- Avoid staying in vulnerable structure.

### **Impact expected and action suggested due to Heat wave/ severe heat wave conditions:**

- ❖ **Heat wave to severe heat wave conditions** likely to continue to prevail over Central & Northwest India during next 7 days; East & adjoining Peninsular India during next 3-5 days.

#### **Red alert Areas**

- Very high likelihood of developing heat illness and heat stroke in all ages.
- Extreme care needed for vulnerable people.

#### **Orange alert Areas**

- High temperature & increased likelihood of heat illness symptoms in people who are either exposed to sun for a prolonged period or doing heavy work.
- High health concern for vulnerable people e.g. infants, elderly, people with chronic diseases.
- Avoid heat exposure– keep cool. Avoid dehydration.
- Drink sufficient water- even if not thirsty.
- Use ORS, homemade drinks like lassi, torani (rice water), lemon water, buttermilk, etc. to keep yourself hydrated.

#### **Yellow alert Areas**

- Moderate temperature & heat is tolerable for general public but moderate health concern likely for vulnerable people e.g. infants, elderly, people with chronic diseases.
- Avoid heat exposure.
- Wear lightweight, light colour, loose, cotton clothes.
- Cover your head, use a cloth, hat or umbrella.

### **Agromet advisories for likely impact of Hailstorms**

- In **North Interior Karnataka**, use hail nets or hail caps in fruit orchards and vegetable plants to protect them from mechanical damage.
- Ensure effective field drainage to prevent waterlogging. Undertake picking of matured fruits at the earliest. Keep the harvested produce in safe places.

### **Agromet advisories for likely impact of Heavy Rainfall**

- In **Arunachal Pradesh**, ensure proper drainage in vegetable, maize, and nursery fields. In WRC paddy, keep drainage channels open to remove excess water from nursery beds. Cover newly sown nursery beds with polythene sheets or straw mulch.
- In **Assam**, undertake harvesting of *Boro* rice after current spells of heavy rain and store the already harvested produce in a safe place. Cover the rice nursery beds with thin polythene sheet. Ensure proper drainage arrangements for quick removal of excess water from rice nurseries, vegetables, banana, citrus and papaya fields.
- **Meghalaya**, harvest the mature banana fruits immediately during clear weather. Make necessary arrangements to remove excess rainwater from the maize, ginger, vegetable, banana and other orchard fields crop fields.
- In **Nagaland**, delay transplanting of brinjal in main field. For already transplanted seedlings, maintain proper drainage in and around the fields of maize, vegetables and orchard.
- In **Manipur**, ensure that ridges and bunds around rice fields are well constructed to maintain the required water level; provide adequate drainage to remove excess rain water from chilli, ginger, turmeric, banana and other crops.
- In **Mizoram**, create drainage channels surrounding the rice fields and utilize grass mulch to cover the seeds. Provide support to fruit-bearing or partially lodge plants/trees. Propping should be done to prevent maize plants from lodging.
- **Tripura** – undertake harvesting of mature Boro rice immediately and shift the harvested produce to a safe and dry place for storage.
- In **Sub-Himalayan West Bengal and Sikkim**, undertake harvesting of matured rice & maize after current spells of heavy rains and keep already harvested produce in a safe place. Ensure proper drainage in rice, maize, jute and vegetables. Postpone fresh sowing of okra.
- In **Tamil Nadu**, maintain proper drainage to prevent water stagnation in cotton, rice nurseries, recently sown cumbu and vegetables,

- In **Kerala**, provide adequate drainage for banana, coconut, and other vegetables. Provide support to banana plants.
- **Lakshadweep**, postpone irrigation, intercultural operations and application of plant protection measures & fertilizers to the standing crops. Provide adequate drainage in standing-crop fields to prevent waterlogging.
- In **Karnataka**, undertake harvesting of matured rice after current spells of rain, ensure proper drainage in paddy fields, arecanut and mango orchards. Provide staking to tomato plants.

#### **Agromet advisories for likely impact of High temperatures/ Heat Waves**

- In **Punjab**, apply light and frequent irrigation to vegetable, moong fruit plants orchards and onion nurseries.
- In **Haryana**, maintain adequate irrigation in standing sugarcane, cotton and summer fodder crops. Complete paddy nursery preparation with assured irrigation facilities and adopt mulching/moisture conservation practices to reduce water stress in newly sown crops
- In **Uttar Pradesh**, provide frequent irrigation and mulching for standing crops such as maize, green gram, black gram, sugarcane, sunflower, vegetables, and fruit plants such as mango, banana, and papaya.
- In **Rajasthan**, apply need-based irrigation to green gram and summer cucurbit crops such as bottle gourd, pumpkin, ridge gourd, cucumber, bitter gourd, and summer ladyfinger, as well as to young fruit plants such as mango, amla, pomegranate, wood apple, and plum. Undertake soil mulching/mulching with straw/polythene to reduce water loss by evaporation.
- In **Bihar** - Apply light and frequent irrigation to the standing crops. Carry out mulching with crop residue, straw or polythene to minimize the loss of soil moisture. Use temporary shade nets to protect the fruit plants from high temperatures.
- In **Jharkhand**, provide light at frequent intervals for pulses and vegetables.
- In **Odisha** - Provide light irrigation to *Boro* paddy, summer maize, green gram, black gram, groundnut, and vegetable fields. Ensure adequate soil moisture is maintained in mango and cashew crops.
- In **Madhya Pradesh**, apply light irrigation to maize, *moong*, *urd*, groundnut, and vegetable crops as required.
- In **Chhattisgarh** - Apply light irrigation after weeding and hoeing in *rabi* maize, banana, and papaya plantations. Complete harvesting of wheat and chickpea, and ensure safe storage.
- In **Vidarbha**, provide light and frequent irrigation to vegetables and orchards during morning or evening hours, with increased frequency during critical growth stages. Irrigate sugarcane, summer groundnut, vegetables, and orchards as required; use organic or straw mulch in vegetables and orchards; cover banana bunches with leaves; and use shade nets in newly planted banana plantations.
- In **Telangana** - Provide irrigation to mango orchards and vegetable crops, as required.
- In **Coastal Andhra Pradesh** regions experiencing hot and humid conditions, apply light irrigation to summer crops and vegetables to maintain soil moisture.
- Apply mulching to conserve soil moisture in the standing crops.

#### **Agromet advisories for likely impact of Thunderstorm / Gusty Winds**

- Shift the harvested produce in safer places or cover the produce with tarpaulin sheets in the fields. Tie the harvested crops securely and cover them to minimize the risk of displacement from strong surface winds.
- Provide mechanical support to horticultural crops and staking or support to vegetables and young fruit plants / fruit-bearing plants to avoid lodging due to strong winds.

#### **Livestock / Poultry / Fisheries**

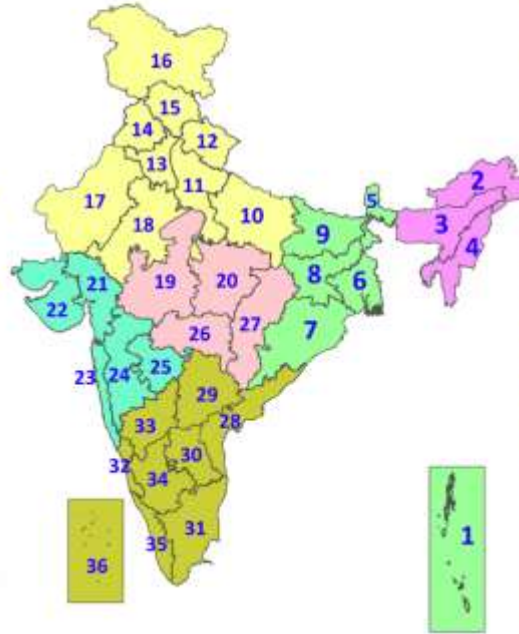
- Keep the animals inside the shed during hailstorms/ heavy rainfall and provide them with balanced feed.
- Store feed and fodder in a safe place to prevent spoilage.
- Construct an outlet with proper netting around the ponds to drain excess water, thereby preventing fish from escaping in the event of overflow.
- In regions with high temperatures and heat waves, provide clean, hygienic, and ample drinking water for animals, and cover the roofs of poultry sheds with grass to reduce the adverse effects.

### **Legends & abbreviations:**

- ❖ **Heavy Rain:**64.5115.5mm; **Very Heavy Rain:**115.6204.4mm; **Extremely Heavy Rain:** >204.4mm.
- ❖ **Obsy:** Observatory; Automatic Weather Station; **ARG:** Automatic Rain Gauge; **dist:** District; **NH:** National Highway; **KVK:** Krishi Vigyan Kendra; **DVC:** Damodar Valley Corporation; **PTO:** Part Time Office, **Aero:** Aerodrome, **IAF:** Indian Air Force.
- ❖ **Region wise classification of meteorological Sub-Divisions:**
  - **Northwest India:** Western Himalayan Region (Jammu-Kashmir-Ladakh-Gilgit-Baltistan-Muzaffarabad, Himachal Pradesh and Uttarakhand); Punjab, Haryana Chandigarh & Delhi; West Uttar Pradesh, East Uttar Pradesh, West Rajasthan and East Rajasthan.
  - **Central India:** West Madhya Pradesh, East Madhya Pradesh, Vidarbha and Chhattisgarh.
  - **East India:** Bihar, Jharkhand, Sub-Himalayan West Bengal & Sikkim; Gangetic West Bengal, Odisha and Andaman & Nicobar Islands.
  - **Northeast India:** Arunachal Pradesh, Assam & Meghalaya and Nagaland, Manipur, Mizoram & Tripura.
  - **West India:** Gujarat Region, Saurashtra & Kutch, Coastal Maharashtra (Konkan) & Goa, Madhya Maharashtra and Marathawada.
  - **South India:** Coastal Andhra Pradesh & Yanam, Telangana, Rayalaseema, Coastal Karnataka, North Interior Karnataka, South Interior Karnataka, Kerala & Mahe, Tamil Nadu, Puducherry & Karaikal and Lakshadweep.

## LEGENDS

1. अंडमान और निकोबार द्वीपसमूह
2. अरुणाचल प्रदेश
3. असम और मेघालय
4. नागालैंड, मणिपुर, मिजोरम और त्रिपुरा
5. उप-हिमालयी पश्चिम बंगाल और सिक्किम
6. गंगीय पश्चिम बंगाल
7. ओडिशा
8. झारखंड
9. बिहार
10. पूर्वी उत्तर प्रदेश
11. पश्चिम उत्तर प्रदेश
12. उत्तराखंड
13. हरियाणा, चंडीगढ़ और दिल्ली
14. पंजाब
15. हिमाचल प्रदेश
16. जम्मू और कश्मीर और लद्दाख
17. पश्चिम राजस्थान
18. पूर्वी राजस्थान
19. पश्चिम मध्य प्रदेश
20. पूर्वी मध्य प्रदेश
21. गुजरात
22. सौराष्ट्र
23. कोंकण और गोवा
24. मध्य महाराष्ट्र
25. मराठवाड़ा
26. विदर्भ
27. छत्तीसगढ़
28. तटीय आंध्र प्रदेश और यनम
29. तेलंगाना
30. रायलसीमा
31. तमिलनाडु, पुडुचेरी और कराईकल
32. तटीय कर्नाटक
33. आंतरिक उत्तरी कर्नाटक
34. आंतरिक दक्षिणी कर्नाटक
35. केरल और माहे
36. लक्षद्वीप



1. Andaman & Nicobar Islands
2. Arunachal Pradesh
3. Assam & Meghalaya
4. Nagaland, Manipur, Mizoram & Tripura
5. Sub-Himalayan West Bengal & Sikkim
6. Gangetic West Bengal
7. Odisha
8. Jharkhand
9. Bihar
10. East Uttar Pradesh
11. West Uttar Pradesh
12. Uttarakhand
13. Haryana, Chandigarh & Delhi
14. Punjab
15. Himachal Pradesh
16. Jammu & Kashmir and Ladakh
17. West Rajasthan
18. East Rajasthan
19. West Madhya Pradesh
20. East Madhya Pradesh
21. Gujarat
22. Saurashtra
23. Konkan & Goa
24. Madhya Maharashtra
25. Marathwada
26. Vidarbha
27. Chhattisgarh
28. Coastal Andhra Pradesh & Yanam
29. Telangana
30. Rayalaseema
31. Tamilnadu, Puducherry & Karaikal
32. Coastal Karnataka
33. North Interior Karnataka
34. South Interior Karnataka
35. Kerala & Mahe
36. Lakshadweep

## SPATIAL DISTRIBUTION (% of Stations reporting)

% Stations	Category	% Stations	Category
76-100	Widespread (WS/Most Places)	26-50	Scattered (SCT/A Few Places)
51-75	Fairly Widespread (FWS/Many Places)	1-25	Isolated (ISOL)

- |                      |                      |              |
|----------------------|----------------------|--------------|
| Fog                  | Heavy Snow           | Cold Wave    |
| Heavy Rain           | Dust Storm           | Cold Day     |
| Very Heavy Rain      | Heat Wave            | Ground Frost |
| Extremely Heavy Rain | Warm Night           |              |
| Thunder & Lightning  | Hot Day              |              |
| Hailstorm            | Hot & Humid          |              |
| Dust Raising Winds   | Strong Surface Winds |              |

### COLOUR CODED WARNING

No Warning (No Action)
Watch (Be Aware)
Alert (Be Prepared To Take Action)
Warning (Take Action)

### Probabilistic Forecast

Terms	Probability of Occurrence (%)
Unlikely	< 25
Likely	25 - 50
Very Likely	50 - 75
Most Likely	> 75

\* Red colour warning does not mean "Red Alert", Red colour warning means "Take Action".  
Forecast and Warning for any day is valid from 0830 hours IST of day till 0830 hours IST of next day.  
For more details, kindly visit <https://mausam.imd.gov.in> or contact: 011-2434-4599  
(Service to the Nation since 1875)

### DEFINITION/CRITERIA

<b>Rain/ Snow *</b>	<p><b>Heavy:</b> 64.5 to 115.5 mm/cm *</p> <p><b>Very Heavy:</b> 115.6 to 204.4 mm/cm*</p> <p><b>Extremely Heavy:</b> &gt; 204.4 mm/cm *</p>
<b>Heat Wave</b>	<p>When maximum temperature of a station reaches <math>\geq 40^{\circ}\text{C}</math> for plains and <math>\geq 30^{\circ}\text{C}</math> for hilly regions</p> <p><b>(a) Based on Departure from normal</b></p> <p><b>Heat Wave:</b> Maximum Temperature Departure from normal <math>4.5^{\circ}\text{C}</math> to <math>6.4^{\circ}\text{C}</math>.</p> <p><b>Severe Heat Wave:</b> Maximum Temperature Departure from normal <math>\geq 6.5^{\circ}\text{C}</math></p> <p><b>(b). Based on Actual maximum temperature</b></p> <p><b>Heat Wave:</b> When actual maximum temperature <math>\geq 45^{\circ}\text{C}</math>.</p> <p><b>Severe Heat Wave:</b> When actual maximum temperature <math>\geq 47^{\circ}\text{C}</math></p> <p><b>( c). Criteria for heat wave for coastal stations</b></p> <p>When maximum temperature departure is <math>&gt;4.5^{\circ}\text{C}</math> from normal. Heat Wave may be described provided maximum temperature <math>\geq 37^{\circ}\text{C}</math></p>
<b>Warm Night</b>	<p><b>When maximum temperature remains <math>40^{\circ}\text{C}</math></b></p> <p><b>Warm Night:</b> When minimum temperature departure <math>4.5^{\circ}\text{C}</math> to <math>6.4^{\circ}\text{C}</math>.</p> <p><b>Severe Warm Night:</b> When minimum temperature departure <math>&gt;6.4^{\circ}\text{C}</math>.</p>
<b>Cold Wave</b>	<p>When minimum temperature of a station <math>\leq 10^{\circ}\text{C}</math> for plains and <math>\leq 0^{\circ}\text{C}</math> for hilly regions.</p> <p><b>(a). Based on departure</b></p> <p><b>Cold Wave:</b> Minimum Temperature Departure from normal <math>-4.5^{\circ}\text{C}</math> to <math>-6.4^{\circ}\text{C}</math>.</p> <p><b>Severe Cold Wave:</b> Minimum Temperature Departure from normal <math>\leq -6.5^{\circ}\text{C}</math></p> <p><b>(b) Based on actual Minimum Temperature (for Plains only)</b></p> <p><b>Cold Wave :</b> When Minimum Temperature is <math>\leq 4.0^{\circ}\text{C}</math></p> <p><b>Severe Cold Wave:</b> When Minimum Temperature is <math>\leq 2.0^{\circ}\text{C}</math></p> <p><b>( c) For Coastal Stations</b></p> <p>When Minimum Temperature departure is <math>\leq -4.5^{\circ}\text{C}</math> &amp; actual Minimum Temperature is <math>\leq 15^{\circ}\text{C}</math></p>
<b>Cold Day</b>	<p>When minimum temperature of a station <math>\leq 10^{\circ}\text{C}</math> for plains and <math>\leq 0^{\circ}\text{C}</math> for hilly regions</p> <p><b>Based on departure</b></p> <p><b>Cold Day:</b> Maximum Temperature Departure from normal <math>-4.5^{\circ}\text{C}</math> to <math>-6.4^{\circ}\text{C}</math>.</p> <p><b>Severe Cold Day:</b> Maximum Temperature Departure from normal <math>\leq -6.5^{\circ}\text{C}</math></p>
<b>Fog</b>	<p><b>Phenomenon of small droplets suspended in air and the horizontal visibility <math>&lt; 1\text{km}</math></b></p> <p><b>Moderate Fog:</b> When the visibility between 500-200 metres</p> <p><b>Dense Fog:</b> when the visibility between 50- 200 metres</p> <p><b>Very Dense Fog:</b> when the visibility <math>&lt; 50</math> metres</p>
<b>Thunderstorm</b>	Sudden electrical discharges manifested by a flash of light (Lightning) and a sharp rumbling sound (thunder)
<b>Dust/Sand Storm</b>	An ensemble of particles of dust or sand energetically lifted to great heights by a strong and turbulent wind.
<b>Frost</b>	<p><b>Ice deposits on ground</b></p> <p>Air temperature <math>\leq 4^{\circ}\text{C}</math> ( over Plains)</p>
<b>Squall</b>	<p><b>A strong wind that rises suddenly, lasts for atleast 1 minute.</b></p> <p><b>Moderate:</b> Wind speed 52-61 kmph</p> <p><b>Severe:</b> Wind speed 62-67 kmph</p> <p><b>Very Severe:</b> Wind speed <math>&gt;67</math> kmph</p>
<b>Sea State</b>	<p><b>Effect of various waves in the sea over specific area</b></p> <p><b>Rough to very rough:</b> Wind speed 41-62 kmph (22-33 knots) &amp; Wave height 2.5-6 metre</p> <p><b>High to very high:</b> Wind speed 63-117 kmph ( 34-63 knots) &amp; Wave height 6-14 metre</p> <p><b>Phenomenal:</b> Wind speed <math>&gt;117</math> kmph (<math>&gt;63</math> knots) &amp; Wave height <math>&gt;14</math> metre</p>
<b>Cyclone</b>	<p><b>Cyclonic Storm:</b> Wind speed 62-67 kmph (34-47 knots)</p> <p><b>Severe Cyclonic Storm:</b> Wind speed 88-117 kmph (48-63 knots)</p> <p><b>Very Severe Cyclonic Storm:</b> Wind speed 118-165 kmph (64 - 89 knots)</p> <p><b>Extremely Severe Cyclonic Storm:</b> Wind speed 166-220 kmph (90 -119 knots)</p> <p><b>Super Cyclone Storm:</b> Wind speed <math>&gt;220</math> kmph (<math>&gt;119</math> knots)</p>

\* Red colour warning does not mean "Red Alert", Red colour warning means "Take Action".  
Forecast and Warning for any day is valid from 0830 hours IST of day till 0830 hours IST of next day.  
For more details, kindly visit <https://mausam.imd.gov.in> or contact: 011-2434-4599  
(Service to the Nation since 1875)